

BERNINITM
F O U N T A I N S

Rechargeable Lion Head Wall Fountain



*Rechargeable Lion
Head Wall Fountain*
Owners Manual

001061_02 LHWF rev 1a uk

BERNINITM

F O U N T A I N S

PLEASE READ FIRST BEFORE RETURNING

**Please call us for assistance at +442036171773
or email us at: customercare@berninifountainsuk.com**

If you have any questions regarding assembly, parts, or operation, please visit our website at www.Berninifountainsuk.com. You will find instructional videos on how to assemble and operate your fountain, and keeps you up to date on our newest products. You can also email us with any questions you have.

This product comes with a six (6) month limited warranty against materials and workmanship.

Please review the list of accessories included with your BerniniTM fountain on the next page. Please note, images of parts are not to scale with one another.

CONTENTS

1	Step 1: Battery Installation
2	Connecting The Battery
3	Inserting Battery Compartment Door
3	Removing The Battery Compartment Door
4	Step 2: Filling your Fountain
5	Filling Your Fountain
6	Step 3: Operating Your Fountain
7	Operating Your Fountain
7	To Program Time
7	Changing The Sound of Your Fountain
8	Troubleshooting and Maintenance
9	Recharging The Battery
10	Cleaning Your Fountain
10	Cleaning The Water Pump's Parts
10	Water Pump Air Filters
10	Water Pump Impeller
11	Priming The Water Pump
11	Cold Storage
11	Hanging The Fountain



Parts for your BerniniTM Lion Head Wall Fountain:



Wall Fountain Assembly



Water Pump
(Already connected to
the tube inside of
the fountain bowl)



Battery Charger



Rechargeable Battery



Battery Compartment
Door



Rocks



Step 1:

Battery Installation

Parts you will need
for this section



Wall Fountain



Rechargeable
Battery

Connecting The Battery



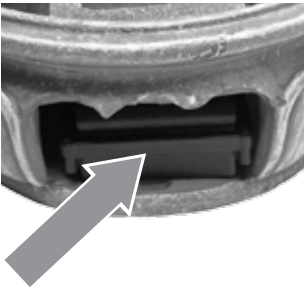
Step 1: In the open battery compartment you will see two cords that must be connected to the battery for your Fountain to operate.

If you do not see the two cables inside the battery compartment, you may need to reach back and gently pull them out until they are outside the battery compartment.

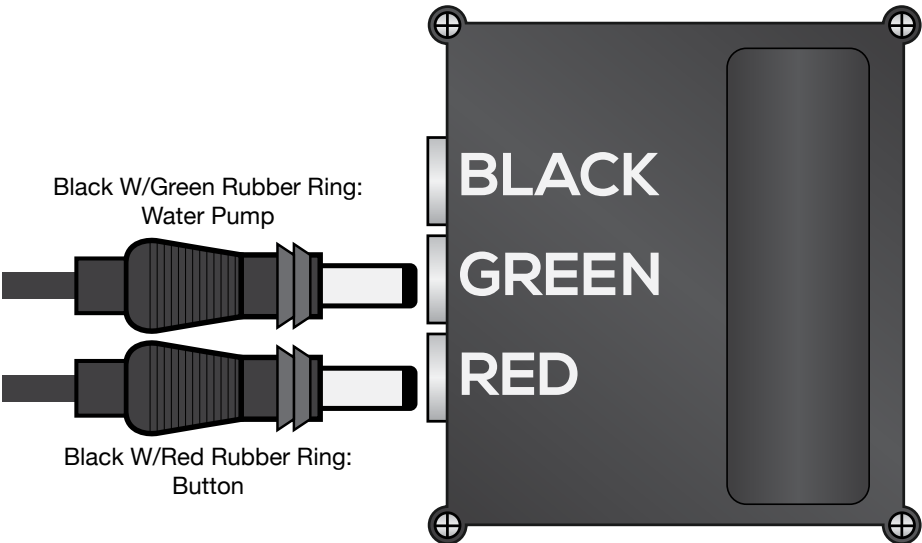


Step 2: Connect the color coded cords to their corresponding receptacles labeled on the battery.

NOTE: Use the diagram below for more help on connecting the battery.



Step 3: Place the battery inside of the compartment as shown in the picture.



Remember! If you ever need help, you can contact our customer care at: +442036171773 or customer care@berninifountainsuk.com

Inserting Battery Compartment Door

After you have connected the cables inside your Fountain to the rechargeable battery, you should then place the battery compartment door on the base of the Fountain.



Step 1: Make sure that no wires are hanging outside of the fountain that might get in the way when inserting the battery cover.

Step 2: Ensure the tab on the bottom of the battery door is lined up with the slot in the bottom of the Fountain battery door opening.

NOTE: The battery door has a strong magnet on the top that holds the battery door in place.

Step 3: Once the door is in place battery door will be flush with Fountain base.

Removing The Battery Compartment Door



Step 1: Carefully disconnect the battery compartment door from the base by gently pulling outward from the top.

Step 2: Then, pull the battery compartment door up and out to remove from the base.

DO NOT OVER EXTEND THE BATTERY COMPARTMENT DOOR BY PULLING DOWN!

This may cause damage to your new Fountain.

Remember! If you ever need help, you can contact our customer care at:
+442036171773 or customercare@berninifountainsuk.com

Step 2:

Filling your fountain

You will need:



Water to
fill your
fountain

Wall Fountain Assembled

Filling Your Fountain*

Fill with water through the main pool reservoir on the bottom front of your fountain. It is recommended filling the fountain base at least half full to obtain the proper sound.

* Fountain will require occasional refilling.



Remember! If you ever need help, you can contact our customer care at:
+442036171773 or customer care@berninifountainsuk.com

Step 3:

Operating Your Fountain

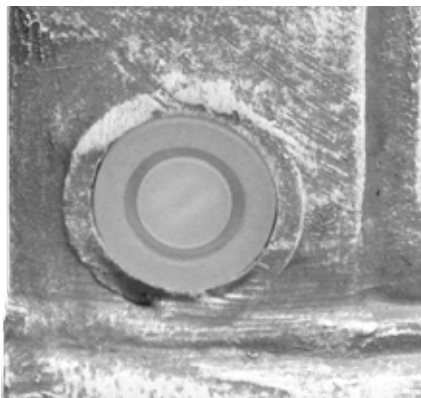
You will need:



Wall Fountain Assembled

Operating Your Fountain

The on-board control panel is located on the side of the fountain just above the bowl on the left side. See the diagram below to see how the all-new on-board controls work for your Fountain.



To Program Time

1. When the system is OFF, press the button ONCE to turn system on for one hour.
2. When the system is OFF, press the button TWICE to turn system on for two hours.
3. When the system is OFF, press the button THREE TIMES to turn system on for three hours.
4. When the system is OFF, press the button FOUR TIMES to turn system on for Four hours.
5. When the system is ON, press and hold the button for 3 seconds to shut off pump.



You can now try your fountain to see if everything is working correctly! Turn your fountain on. You should see water flowing from the outlet (Lions Mouth) on the front of the fountain. If water is not flowing, try priming the water pump, instructions are on page 11.

Changing The Sound Of Your Fountain

Would you like to change the sound of your fountain? You can add various items including rocks(included with your fountain), to the screened area located by the arrow in the image to the right.





Troubleshooting and Maintenance

Troubleshooting and Maintenance

Recharging The Battery

Is it time to charge the battery of your Bernini Fountain?



NOTE: Begin by disconnecting and then removing the battery from the base of your Fountain.

Step 1: Plug the battery charger into an electrical wall outlet.

Note: Please ensure that the receptacle being used for charging your fountain is working properly. If the charger is plugged into a socket that is not functioning the green light will illuminate as if the battery is charging but the battery will not charge.

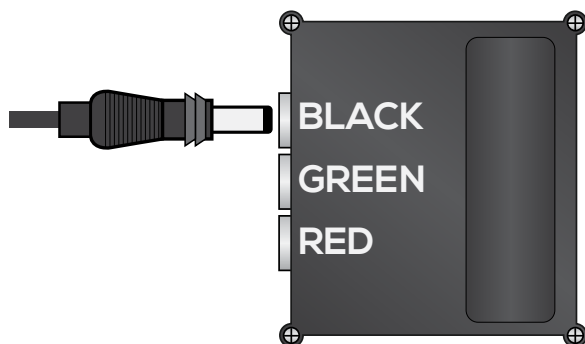


Step 2: Remove the rubber protective stopper inside of the charging receptacle.

Then plug the cord running from the battery charger to the black labeled receptacle on the rechargeable battery. While the battery is charging, the light next to the charger receptacle will blink.



Step 3: Charge the battery for 12-14 hours. When the battery is fully charged, the light will stop blinking and the light will be solid. At this point, you can remove the battery from the charger and plug the battery into your Fountain.



Connect the black cord of the charger to the black labeled receptacle. Unplug cords from battery before charging.

IMPORTANT

DO NOT CHARGE ON COUNTER TOPS, CARPETS OR OTHER FINISHED SURFACES. IT IS RECOMMENDED THAT THE BATTERY BE PLACED ON A CONCRETE SURFACE WHILE CHARGING.

Remember! If you ever need help, you can contact our customer care at: +442036171773 or customercare@berninifountainsuk.com

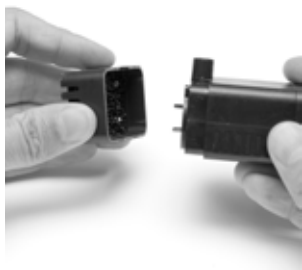
Cleaning your Fountain

In order to keep your fountain in tip-top shape and free of algae, you should clean your fountain every two months. To clean your fountain, drain of all water and disassemble. Use a mild soap and a soft cloth to clean the parts of your Bernini™ fountain. Your fountain bowl will form a natural patina finish which with time may appear lighter or whiter than the original color. This is normal. **DO NOT SCRUB YOUR FOUNTAIN, AS THIS COULD CAUSE DAMAGE TO THE FINISH OF YOUR BERNINI™ FOUNTAIN.**

Cleaning the Water Pump's Parts

Water Pump Air Filters

After about six weeks of usage, you may want to clean the water pump's filter and impeller to keep your Bernini Fountain in tip-top shape.



Remove the front of the water pump by grabbing the sides of the front panel and pull it off the unit.



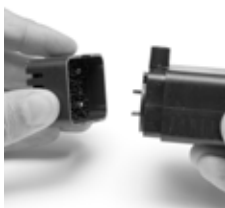
Pull the water pump filter from the front panel.



Wash the filters under running water until debris has been removed. Then replace the filters and pump's front cover.

Water Pump Impeller

The impeller inside of the water pump is what pushes water up through your fountain, allowing you to enjoy the soothing sounds and wonderful sights of your Bernini Fountain. After long periods of usage, this part will need to be cleaned to make sure your fountain runs optimally.



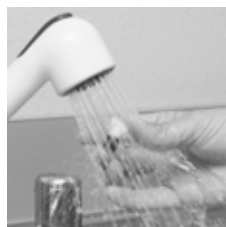
Remove the front of the water pump by grabbing the sides of the front panel and pull it off the unit.



Remove the impeller chamber cover. This is tightly fitted on to the impeller chamber, but will come off.



Remove the impeller from its chamber.



Rinse the impeller until all debris has been removed. Then replace the impeller in the impeller chamber, put the impeller chamber back on and then replace the pump's front panel.

Remember! If you ever need help, you can contact our customer care at:
+442036171773 or customer care@berninifountainsuk.com

Is your fountain making a loud noise or do you not see water flowing?

Try Priming the Water Pump

If you find the water pump is running, but water is not flowing from your fountain, or you hear a loud grinding noise coming from your fountain, not to worry, you can try priming the water pump:

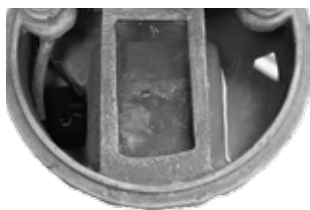
Begin by turning your fountain off. Firmly grasp onto the two sides of the fountain. Agitate the water by quickly shaking the fountain back and forth for about five seconds. Stabilize your fountain and press the Button to turn your fountain On.

If the problem still persists, repeat previous step 2 - 3 times. This helps dislodge any air bubbles in your pump that may be causing the problem.

If the problem still persists, try the method below:

Now detach the water pump from the feeder tube inside the fountain bowl.

When removing the water pump, use caution when pulling the pump from the feeder tube. Pinch the bottom of the feeder tube close to the pump with one hand and then pull the water pump from the feeder tube with your other hand.



Step 1: Submerge the water pump into the water inside the bowl and lightly shake the pump underwater to release air bubbles inside the vents on the water pump.



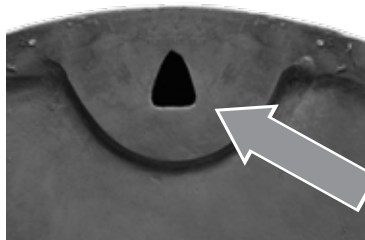
Step 2: Turn the fountain on and you should see water flowing from the pump. Let the pump run for about ten seconds and then turn your fountain off.



Step 3: Reconnect the water pump to the feeder tube inside the fountain bowl.

Cold Storage

Drain the water from fountain prior to the first freeze of the season. Clean and dry the fountain of all water. Remove the rechargeable battery and the water pump and bring it indoors. (Now is a great time to clean the pump to remove any debris that may have accumulated throughout the year. See page 10.) Store in a warm dry area.



Hanging The Fountain

There is a notch in the back of the Lion Head Wall Fountain for correct wall hanging. Weight of the fountain including fountain, battery and water is approximately 4 kgs. We recommend you visiting your local hardware store with your wall specifications to obtain the correct hardware for mounting the Fountain.

Remember! If you ever need help, you can contact our customer care at: +442036171773 or customercare@berninifountainsuk.com

BERNINITM

F O U N T A I N S

LIMITED SIX MONTH WARRANTY

This product has a six months limited warranty on all materials and workmanship. Bernini warrants the original purchaser of this product that the product will be free from manufacturing defects in workmanship and material for a period of six (6) months from the date of original purchase. If within six (6) months this product fails due to defect in material or workmanship, Bernini will repair, replace or supply any defective part at their option. The purchaser must contact Bernini and provide a description of the defective part, including digital pictures if requested, with this original purchase documentation as validation of warranty coverage. This warranty gives you specific legal rights and you may also have other rights which varies from state to state.

This warranty does not cover or apply to: (a) damage to the product due to misuse, mishandling, and abuse, (b) products not used in accordance with instructions, (c) product not assembled or installed according to instructions, and (d) normal wear and tear.

Call us for assistance at +442036171773 or you can email us at:
customer@berninifountainsuk.com
Our Customer Care Department is available:

IMPORTANT BATTERY SAFETY INSTRUCTIONS

DANGER: Do not store battery in an airtight container as it may cause an explosion.

WARNING: When using electric devices, basic safety precautions should always be followed to reduce the risk of fire, electric shock and personal injury, including the following:

WARNING:

1. Do not incinerate the battery even if it is severely damaged or is completely worn out. The battery can explode in a fire. Check with municipal codes in your area for possible special disposal instructions.
2. If liquid leaks from the battery cell, discontinue use immediately and dispose of properly.
3. Do not charge battery in rain or in wet location.
4. Never attempt to open the battery for any reason. If the plastic housing of the battery breaks or cracks, immediately discontinue use and do not recharge. If the battery appears to be dusty or dirty, wipe it off with a soft cloth.
5. Use only the included battery. Contact our customer care line for a replacement at +442036171773.
6. Do not attempt to disassemble, remodel or destroy the battery, as it may cause battery leakage, fire, or bursting; possible burns to person(s) and damage to the immediate environment.
7. Exercise care in handling batteries in order not to short the battery with conducting materials such as rings, bracelets or keys. The battery or conductor may overheat and cause burns.
8. The battery contains diluted sulfuric acid, a very toxic substance. If the battery leaks and the liquid inside spills on the skin or clothing, immediately wash it off with plenty of clean water. If the liquid splashes into eyes, immediately flush the eyes with plenty of clean water and consult a doctor. Sulfuric acid in the eyes may cause loss of eyesight and acid on the skin will cause burns.
9. Charge battery using the specified charger and under the charging conditions as specified. Charging the battery under any other conditions may cause the battery to overheat, emit hydrogen gas, leak, ignite or burst.
10. When this product is not used for 30 days or more, remove the battery from the fountain, charge it fully and store in a place where humidity is low. Do not store the battery under direct sunlight or in high temperatures. Unsatisfactory storage conditions may cause deterioration in battery performance, and may shorten the service life.
11. When charging the battery always do so in a well ventilated area and where you can observe the charging process.
12. Never dispose of batteries in the garbage. Disposal of batteries in the garbage is unlawful under state and federal environmental laws and regulations. Always take used batteries to your local battery-recycling center.
13. **DO NOT CHARGE ON COUNTER TOPS, CARPETS OR OTHER FINISHED SURFACES. IT IS RECOMMENDED THAT THE BATTERY BE PLACED ON A CONCRETE SURFACE WHILE CHARGING.**

This device complies with Part 15 of the FCC Rules. Operation is subject to the following two conditions: (1) this device may not cause harmful interference, and (2) this device must accept any interference received, including interference that may cause undesired operation.

WARNING: Changes or modifications to this unit not expressly approved by the party responsible for compliance could void the user's authority to operate the equipment."

NOTE: This equipment has been tested and found to comply with the limits for a Class B digital device, pursuant to Part 15 of the FCC Rules. These limits are designed to provide reasonable protection against harmful interference in a residential installation. This equipment generates, uses and can radiate radio frequency energy and, if not installed and used in accordance with the instructions, may cause harmful interference to radio communications.

However, there is no guarantee that interference will not occur in a particular installation. If this equipment does cause harmful interference to radio or television reception, which can be determined by turning the equipment off and on, the user is encouraged to try to correct the interference by one or more of the following measures:

- Reorient or relocate the receiving antenna.
- Increase the separation between the equipment and receiver.
- Connect the equipment into an outlet on a circuit different from that to which the receiver is connected.

Consult the dealer or an experienced radio/TV technician for help.



BERNINITM

F O U N T A I N S

Santee, California 92071

World Wide Patents Pending

On the web: www.berninifountainsuk.com

Facebook: berninifountains Twitter: @yrdllc

© Yeiser Research & Development, LLC; 2016. All rights reserved.

Bernini Fountain Company UK, Suite 114, 315 High Road
Chiswick London W4 4HH United Kingdom

Distributed by: QVC London Building 8 Chiswick Park 566 Chiswick High Road
London W4 5XU

Made in China